

This is an extract from the Victorian National Parks Association’s Campaign booklet:

‘Better Protection for Special Places’.

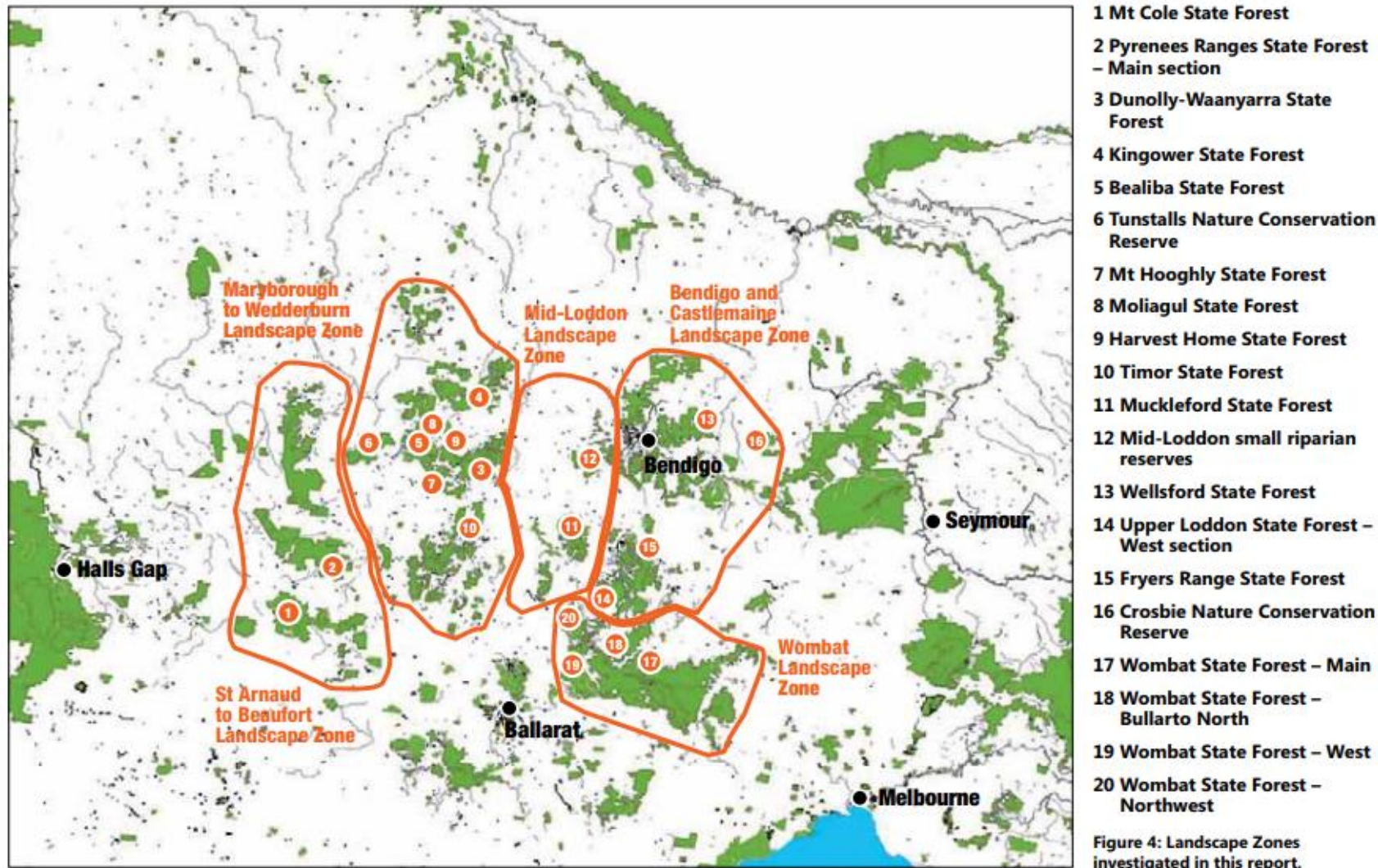
You will see that VEAC are already ‘investigating’ some of these areas – such as Mt Cole, Wombat and Wellsford. The influence of the VNPA over VEAC and Government policy is considerable. If they get these new parks in the current investigation, they won’t stop until they have all public land.

LOCATION & LAND STATUS	APPROX AREA Ha	DIVERSITY (no of EVCs*) H, M, L	THREATENED SPECIES		CONSERVATION SIGNIFICANCE H, M, L	THREATS H, M, L	RECOMMENDATIONS	
			Fauna H, M, L	Flora H, M, L			Management needs	Land tenure Proposed category of tenure
St Arnaud to Beaufort								
Mt Cole State Forest	8,926	H	M	H	H	H	✓	State Park
Pyrenees Ranges State Forest – Main section	14,680	H	M	L	H	H	✓	State Park, include Percydale Historic Area and Landsborough and Landsborough Hill Nature Conservation Reserves
Maryborough to Wedderburn								
Dunolly-Waanyarra State Forest	7,547	M	M	L	M	M	✓	State Park
Kingower State Forest	4,690	H	H	H	M	M	✓	State Park
Bealiba State Forest	7,954	H	H	L	M	M	✓	State Park
Tunstalls Nature Conservation Reserve	1,637	L	L	L	M	L	✓	–
Mt Hooghly State Forest	2,121	M	H	L	M	M	✓	State Park
Mollagul State Forest	1,396	M	L	L	M	M	✓	State Park
Harvest Home State Forest	2,242	M	L	L	M	M	✓	State Park
Timor State Forest	1,379	L	M	L	M	M	✓	State Park
Mid-Loddon								
Muckleford State Forest	3,152	M	H	M	M	M	✓	Add to Maldon Historic Reserve
Mid-Loddon small riparian reserves	81	L	L	L	H	L	✓	–
Bendigo Castlemaine Region								
Wellsford State Forest	7,122	M	H	M	M	H	✓	State Park
Upper Loddon State Forest – West section	1,806	L	L	L	M	M	✓	Add to Castlemaine Diggings National Heritage Park
Fryers Range State Forest	3,321	L	L	L	M	M	✓	Add to Castlemaine Diggings National Heritage Park
Crosbie Nature Conservation Reserve	2,056	M	H	L	M	L	✓	–
Wombat Region								
Wombat State Forest - Main	31,448	H	H	H	M	H	✓	State Park
Wombat State Forest – Bullarto North	5,747	M	M	L	H	H	✓	State Park
Wombat State Forest – West	5,085	H	M	L	H	H	✓	State Park
Wombat State Forest – Northwest	2,820	M	L	L	M	M	✓	Nature Conservation Reserve

Table 1 Summary of Results for High Priority Sites. * Ecological Vegetation Class.

KEY: High (H), Medium (M), Low (L)

Just look at the extent of the VNPA's demands for Central Victoria. This is in addition to the existing parks that are not shown on this map.



Please don't stand by and let this happen. Act now to stop the loss of State Forests before it's too late.